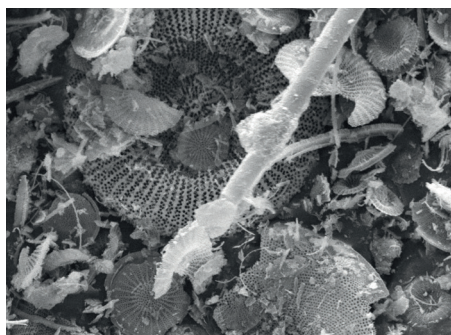


# RELIABLE FILTRATION



# HOBRA Kieselgur

FILTER AIDS

**HOBRA** ŠKOLNÍK

FILTER MEDIA  
FILTER EQUIPMENT AND TECHNOLOGY



# HOBRA Kieselgur – Filter aids

## Characteristics

HOBRA Kieselgur is a diatomaceous earth produced from shells of dead tertiary diatoms. It is suitable for all types of globally used pre-coating filters. We offer a complete series of high-quality diatomaceous earth from coarse grades HOBRA 700, 600 and 500, suitable for basic pre-coating, through fine coarse grade HOBRA 250, up to very fine diatomaceous earth grade HOBRA 150, 100 and 40. The proper use of HOBRA Kieselgur ensures high filtrate purity. HOBRA Kieselgur meets all quality standards and is suitable for the use in Food & Beverage industry.

## Grades and technical specifications

	H040	H100	H150	H250	H500	H600	H700
<b>Filtration Velocity</b> (l/min.m <sup>2</sup> )	10–30	60–100	50–80	150–350	450–550	550–650	650–750
<b>Permeability (Darcy)</b>	0,012–0,030	0,080–0,150	0,065–0,100	0,20–0,45	0,50–0,70	0,50–0,85	0,80–1,20
<b>Bulk Density</b> (kg/m <sup>3</sup> )	max. 250	max. 210	max. 250	max. 250	max. 300	max. 300	max. 300
<b>Wet Density</b> (kg/m <sup>3</sup> )	max. 650	max. 500	max. 500	max. 500	max. 500	max. 500	max. 500
<b>Water Leach</b> (pH)	6–8	7–9	7–9	7–9	7–9	7–9	7–9
<b>Technological Humidity</b> (%)	max. 6	max. 1	max. 1	max. 1	max. 1	max. 1	max. 1
<b>Smell</b>	–	–	–	–	–	–	–
<b>Taste</b>	–	–	–	–	–	–	–
<b>Colour</b>	light grey	beige	beige	beige	beige	beige	beige
<b>Granularity – Residue on Sieve</b>							
0,250 mm	max. 0	max. 0	max. 0	max. 0	max. 0	max. 0	max. 0
0,045 mm	max. 1	max. 0,02	max. 3	max. 3	max. 15	max. 15	max. 15
<b>Chemical Analysis</b>							
SiO <sub>2</sub>	min. 78	min. 80	min. 78	min. 78	min. 78	min. 78	min. 78
Al <sub>2</sub> O <sub>3</sub>	max. 13	max. 13	max. 13	max. 13	max. 13	max. 13	max. 13
Fe <sub>2</sub> O <sub>3</sub>	max. 1,5	max. 1,5	max. 1,5	max. 1,5	max. 1,5	max. 1,5	max. 1,5
LOI (%)	max. 7	max. 0,5	max. 0,5	max. 0,5	max. 0,5	max. 0,5	max. 0,5
<b>Pollutant Content</b>	<b>COMPENDIUM of FOOD ADDITIVE SPECIFICATIONS VOLUME 1 (ROME)</b>						
As (mg/kg)	< 10,0	< 10,0	< 10,0	< 10,0	< 10,0	< 10,0	< 10,0
Pb (mg/kg)	< 10,0	< 10,0	< 10,0	< 10,0	< 10,0	< 10,0	< 10,0
Other heavy metals (mg/kg)	< 50,0	< 50,0	< 50,0	< 50,0	< 50,0	< 50,0	< 50,0
<b>Extraction</b>	<b>MEBAK 1.1.2.6.1</b>						
Al (mg/kg)	max. 120	max. 250	max. 280	max. 250	max. 150	max. 150	max. 150
Pb (mg/kg)	max. 1000	max. 35	max. 180	max. 40	max. 100	max. 100	max. 100
Fe (mg/kg)	max. 50	max. 80	max. 80	max. 80	max. 50	max. 50	max. 50

## Packaging

<b>H040, H150, H250</b>	15 kg / Sack	675 kg / pallet 120 x 80 cm
<b>H100</b>	15 kg / Sack	630 kg / pallet 120 x 80 cm
<b>H500, H600, H700</b>	20 kg / Sack	720 kg / pallet 120 x 80 cm